



NAMAS Weekly Auditing & Compliance Tips

July 29, 2016

History of Present Illness

Per Medicare's 1995 and 1997 documentation guidelines, "HPI is a chronological description of the development of the patient's present illness from the first sign and/or symptom or from the previous encounter to the present." The History of Present Illness (HPI) is the story that explains the progress of the condition that is leading to the patient being evaluated today. The provider of service is expected to obtain the HPI, but it can be in the patient's own words. HPI is broken out into eight elements:

1. Location is where on the patient the problem is occurring. For example: patient's carpal tunnel is worse in the **left wrist**.
2. Quality is describing the type of problem that is occurring. Is the problem radiating, spreading, burning, sharp, etc. For example: The back pain **radiates** from the neck to the lower back.
3. Severity is used to describe how intense, or severe the problem is. This can be a scale (1:10), a brief description (can hold no weight), a percentage (50% of the skin) or showing if it is improving or worsening. For example: The cellulitis **has spread** to cover the thigh.
4. Duration is the length of time the patient has had the problem, or could possibly represent the length of time the patient has been undergoing a specific treatment for the

[CLICK HERE](#)



[TO LISTEN TO THIS WEEK'S TIP](#)

Not Yet
a Member?



As a NAMAS member, you'll receive access to monthly webinars for CEUs (including those hard to find CPMA CEUs!), a subscription to BC Advantage magazine, discounts on products and NAMAS training events, and much, much more!

We offer 4 membership levels- choose the one that best suits your needs!

[Click Here to View NAMAS Membership Levels and Benefits](#)

For added convenience, NAMAS accepts PayPal, PayPal Credit, quarterly and monthly payments of membership dues.

Become a Medical Auditor with a NAMAS Medical Auditing BootCamp!

problem. For example: the patient has been sick for **3 days**.

5. Timing is when the problem is occurring. For example: Headache occurs **upon waking** and eases up around noon.

6. Context is what was occurring at the time the problem started. For example: patient **fell off a ladder** and hurt their back.

7. Modifying Factors are what has helped the problem, or made it worse. The best practice is to specifically state if the modifying factor made the problem improve, or made it worse. For example: Pt has headache. Took **Advil with no effect**.

8. Associated Signs and Symptoms are the symptoms that are occurring as a result of the underlying concern. For example: the patient's migraine has gotten so bad her **vision is blurring**. A completely unrelated condition or symptom may not be considered an associated sign or symptom but if the coder is not certain whether the condition may be related the provider should be given credit for the documentation.

If a patient has multiple complaints, the HPI elements can be mixed and matched between the various complaints.

Example: A patient presents with rib pain from an accident and also complains of tinnitus, for the last 6 months, that happens after running. This counts as *location* (rib), *context* (accident), *duration* (6 months) and *timing* (after running), even though "6 months" and "after running" refer to the tinnitus, not the rib pain.

It is up to the provider of service to document the HPI as specifically as possible. It is the expectation that the HPI is to be obtained and documented by the provider of service. Information obtained from ancillary staff or a form completed by the patient do not count as the HPI. Even in an electronic medical record, this is still expected to be documented by the provider. There are only two types of HPI. A brief HPI is the documentation of 1-3 HPI elements. An extended HPI is the documentation of either 4+ HPI elements, or the status of three chronic conditions that are being addressed that day.

Reference: Medicare Learning Network: Evaluation and Management Services retrieved from <https://www.cms.gov/Outreach-and-Education/Medicare-Learning-Network-MLN/MLNProducts/Downloads/eval-mgmt-serv-guide-ICN006764.pdf>

This Week's Audit Tip
Provided by:

**Become
a
CPMA**



NAMAS Medical Auditing BootCamp®

Our onsite or online training program will not only prepare you to sit for the medical auditing certification test, but will prepare you for a career as a medical auditor.

As a bootcamp attendee, you will receive the NAMAS Auditor's Resource & Prep Guide, 16 AAPC CEUs, AND a 1 year NAMAS membership!

Our **onsite** schedule is as follows:

August 24-25: Atlanta, GA

September 15-16: Nashville, TN

October 6-7: Birmingham, AL

November 3-4: Charlotte, NC

December 5-6: Orlando, FL

Our next **online** session begins
September 10!

**Click Here to Learn More About The
NAMAS Medical Auditing BootCamp**

**Take Your Auditing Skills to the
Next Level at an E/M Auditing
BootCamp**

NAMAS E/M Auditing BootCamp

Omega Renne, CPC, CPCO, CPMA, CEMC, CIMC
Omega is a Senior Auditing Specialist for our parent organization, DoctorsManagement, LLC



For those with a basic foundation of E&M auditing, or experienced E&M auditors just looking for a refresher, our 1-day E&M Auditing BootCamp is for you!

MDM? Medical Necessity? Guidelines? Audit Policies? We'll cover all of this AND more in this training program

Attend one of our upcoming **ONLINE** or **ONSITE** sessions:

We have 3 **online** series options to choose from:

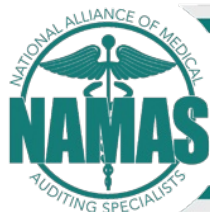
1. Online Tues/Thurs evening courses- beginning August 9th (only 1 spot left!)
2. Live online 1-day session: October 24
3. Live online lunch & learns: August 22 & 24 OR September 27 & 28

Or, attend one of our 1-day **onsite** sessions:

- August 30, 2016: Tampa, FL
- September 8, 2016: Knoxville, TN
- September 14, 2016: San Antonio, TX
- October 6, 2016: Covington, LA
- November 15, 2016: Columbus, OH

Click Here to Learn More About The NAMAS E&M Auditing BootCamp

We Want to See You In Orlando!



8TH ANNUAL
Auditing & Compliance
CONFERENCE 2016

You're Invited to Join us at the 8th Annual Auditing & Compliance Conference

Dates: Pre-Conference: Tuesday, December 6, 2016
Conference: Wednesday, December 7- Friday
December 9, 2016

Venue: Loews Portofino Bay Hotel, Orlando, FL

This is the **ONLY** conference designed for medical auditors and compliance professionals!

Earn Up to 21.5 AAPC CEUs good toward Core A, CPMA, CPCO & CEMC certifications



Where better to be in December than in beautiful Orlando, Florida learning from the best in the business, networking with your peers, and **earning up to 21.5 AAPC CEUs?**
Get into the holiday spirit NOW- during our exhibitor

reception (Wednesday evening during conference), we will be hosting our first ever Ugly Holiday Sweater contest! Don your ugliest holiday attire - our exhibitors will vote for

Weekly Tip Sponsor



the ugliest apparel and the winner will receive a scholarship to attend our 2017 conference for free! Start putting together your outfits now!

There's more good news! **NEW FOR 2016-** we've partnered with RACmonitor to provide a **FACILITY AUDITING track** during both pre-conference and conference! Attendees can select their pre-conference and conference sessions from any one of the following tracks: Physician-Based Auditing, E&M Auditing, Facility-Based Auditing, and Physician- Based Compliance! **Don't delay in registering- Lock in your conference rate with only a \$50 deposit!**

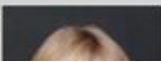
[Click Here to View the Conference Agenda](#)

[Register Now](#)

NAMAS Conference Speaker Spotlight

Speaker Spotlight

Meet our speakers for the



Robin Zweifel

BS, MT (ASCP)

Senior Vice President of Revenue

NAMAS Calendar of Events



Click the image above to view our monthly calendar

Upcoming Webinars

NAMAS is proud to present the following webinars in July



The Role of QA in an Effective Audit Policy
Speaker: Sara San Pedro
August 9, 2016
2pm EST

E/M Encounter Review
Speaker: Kathy Pride
August 16, 2016
2pm EST

HIPAA Compliance for the Auditor
Speaker: Kelly Ogle
August 23, 2016
2pm EST

NAMAS Members: Watch your Email for Registration Links

Non-Members: Email namas@namas.co to learn how to attend these webinars



Capture, Panacea Healthcare Solutions

NAMAS 8th Annual Auditing & Compliance Conference

December 6-9, 2016
Orlando, FL
Loews Portofino Bay Hotel

View the full conference agenda & register today at www.namasconference.com

Conference Sessions:

- Audit Sampling & Extrapolation
- Answering Your Questions: A Better Understanding of Infusion Services
- Moving Forward: New Knowledge and New Challenges for CDM Auditors



8th ANNUAL
Auditing & Compliance
CONFERENCE 2016

Save With PowerBuying



Buy a PC, Get a Free TV through Dell's Member Purchase Program, available through our PowerBuying Program

Conditions apply, click the image above for details

A Note From Our Tip Sponsor



Exclusion Screening, LLC provides an all in one service that checks employees, contractors, and vendors of your organization for federal and state exclusions. Founded by healthcare attorneys with combined experience of over 50 years, Exclusion Screening can help your organization- contact them for your individual assessment today.

Complimentary Tip of the Week

Our weekly auditing & compliance tip emails are available to anyone who could benefit from this information.

If you know someone who would like to receive these emails, invite them to sign.

Click the image above to be added to our email list!

DOCTORS[®]
MANAGEMENT
Leave the business of medicine to us

NAMAS is a division of DoctorsManagement, a full service healthcare consulting firm in business since 1956. Click the DoctorsManagement logo to learn more and request your free consultation today

Do You Want to be Published?

Are you a professional in the healthcare industry who would like to be featured in our weekly auditing and compliance tips?

Submit your 500-1000 word tip to NAMAS via email to namas@namas.co

If your tip is used in one of our weekly emails, we will provide you with a Visa Gift Card for use of your tip.

In This Issue

[History of Present Illness](#)
[NAMAS 8th Annual Conference](#)
[Exclusion Screening](#)
[Become a NAMAS Member](#)
[Medical Auditing BootCamp](#)
[E&M Auditing BootCamp](#)
[Calendar of Events](#)
[Upcoming Webinars](#)
[Receive These Tips](#)
[Follow NAMAS](#)

Stay Infomed

Stay up to date with important news and announcements from NAMAS. Follow our social media pages to ensure you don't miss a beat!

